

© International Baccalaureate Organization 2024

All rights reserved. No part of this product may be reproduced in any form or by any electronic or mechanical means, including information storage and retrieval systems, without the prior written permission from the IB. Additionally, the license tied with this product prohibits use of any selected files or extracts from this product. Use by third parties, including but not limited to publishers, private teachers, tutoring or study services, preparatory schools, vendors operating curriculum mapping services or teacher resource digital platforms and app developers, whether fee-covered or not, is prohibited and is a criminal offense.

More information on how to request written permission in the form of a license can be obtained from <https://ibo.org/become-an-ib-school/ib-publishing/licensing/applying-for-a-license/>.

© Organisation du Baccalauréat International 2024

Tous droits réservés. Aucune partie de ce produit ne peut être reproduite sous quelque forme ni par quelque moyen que ce soit, électronique ou mécanique, y compris des systèmes de stockage et de récupération d'informations, sans l'autorisation écrite préalable de l'IB. De plus, la licence associée à ce produit interdit toute utilisation de tout fichier ou extrait sélectionné dans ce produit. L'utilisation par des tiers, y compris, sans toutefois s'y limiter, des éditeurs, des professeurs particuliers, des services de tutorat ou d'aide aux études, des établissements de préparation à l'enseignement supérieur, des fournisseurs de services de planification des programmes d'études, des gestionnaires de plateformes pédagogiques en ligne, et des développeurs d'applications, moyennant paiement ou non, est interdite et constitue une infraction pénale.

Pour plus d'informations sur la procédure à suivre pour obtenir une autorisation écrite sous la forme d'une licence, rendez-vous à l'adresse <https://ibo.org/become-an-ib-school/ib-publishing/licensing/applying-for-a-license/>.

© Organización del Bachillerato Internacional, 2024

Todos los derechos reservados. No se podrá reproducir ninguna parte de este producto de ninguna forma ni por ningún medio electrónico o mecánico, incluidos los sistemas de almacenamiento y recuperación de información, sin la previa autorización por escrito del IB. Además, la licencia vinculada a este producto prohíbe el uso de todo archivo o fragmento seleccionado de este producto. El uso por parte de terceros —lo que incluye, a título enunciativo, editoriales, profesores particulares, servicios de apoyo académico o ayuda para el estudio, colegios preparatorios, desarrolladores de aplicaciones y entidades que presten servicios de planificación curricular u ofrezcan recursos para docentes mediante plataformas digitales—, ya sea incluido en tasas o no, está prohibido y constituye un delito.

En este enlace encontrará más información sobre cómo solicitar una autorización por escrito en forma de licencia: <https://ibo.org/become-an-ib-school/ib-publishing/licensing/applying-for-a-license/>.

**Biology**  
**Higher level**  
**Paper 2**

14 May 2024

**Zone A** morning | **Zone B** morning | **Zone C** morning

Candidate session number

2 hours 15 minutes

--	--	--	--	--	--	--	--	--	--

**Instructions to candidates**

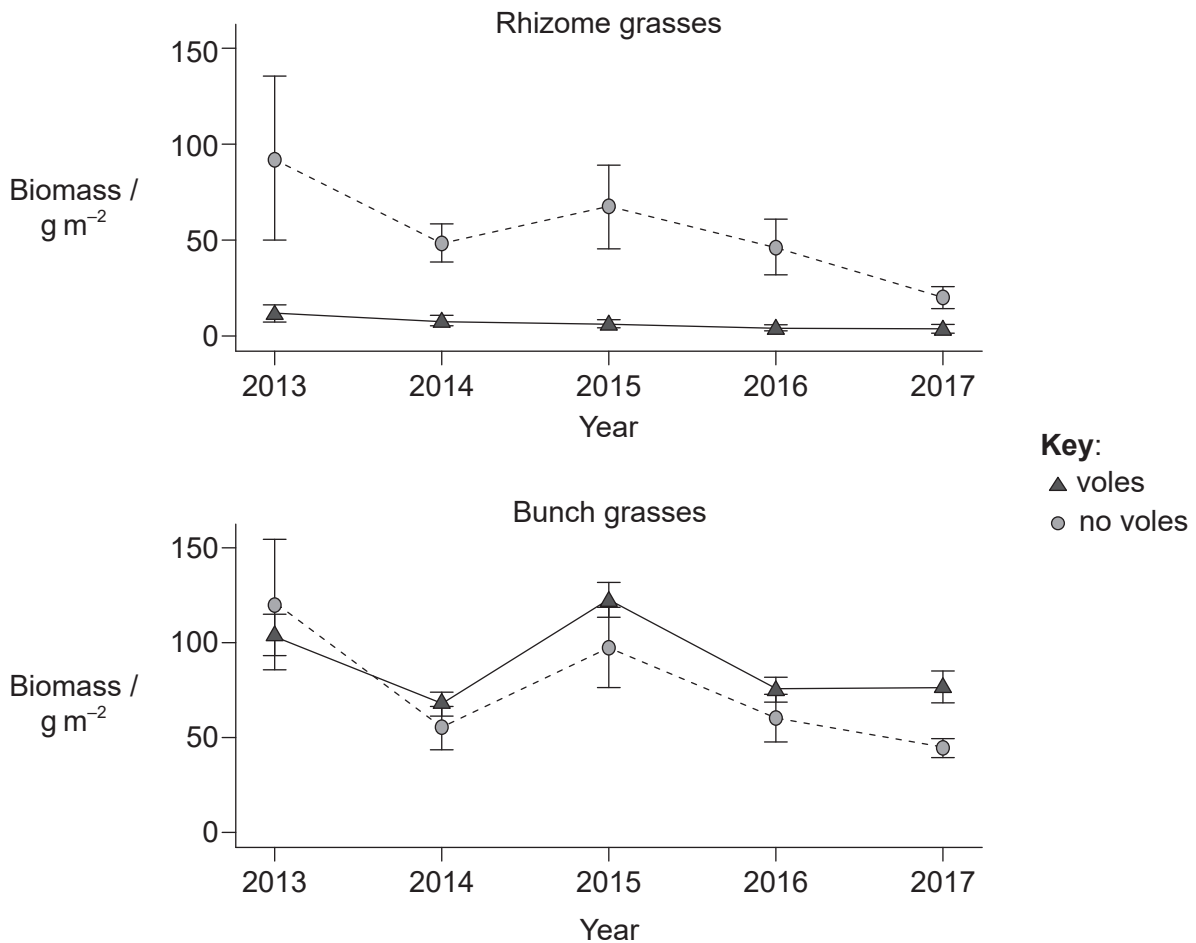
- Write your session number in the boxes above.
- Do not open this examination paper until instructed to do so.
- Section A: answer all questions.
- Section B: answer two questions.
- Answers must be written within the answer boxes provided.
- A calculator is required for this paper.
- The maximum mark for this examination paper is **[72 marks]**.



### Section A

Answer **all** questions. Answers must be written within the answer boxes provided.

1. Brandt's voles (*Lasiopodomys brandtii*) are small herbivorous rodents that live in the steppe grassland of Inner Mongolia. These mammals live in large family groups and feed on the roots, stems and leaves of a wide variety of plants that grow near their burrows. Their feeding activities have been found to have a large impact on the grassland vegetation. Researchers investigating the impact of these voles on the vegetation marked out plots of land and recorded how the biomass of two types of grasses, rhizome grasses and bunch grasses, changed in the presence and absence of voles from the years 2013 to 2017.



- (a) Identify the year in which the greatest biomass of bunch grasses was recorded in plots with voles present.

[1]

.....

(This question continues on the following page)



**(Question 1 continued)**

- (b) Compare and contrast the mean biomass of the two types of grass in 2013 in the presence and absence of voles.

[2]

.....

.....

.....

.....

- (c) The voles derive nutrition from only one type of the grasses. Deduce with a reason which type.

[1]

.....

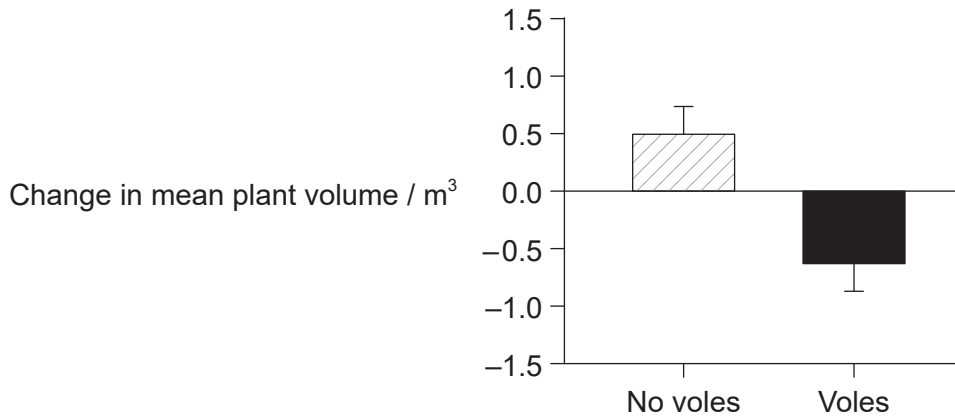
.....

**(This question continues on the following page)**



**(Question 1 continued)**

In a second study carried out from 2019 to 2020, researchers looked at how the presence of voles changed the plant volume of one type of bunch grass, *Achnatherum splendens*, in measured plots of land. This was done by measuring the change in plant volume of *A. splendens* in the plots.



- (d) Calculate the mean difference in plant volume in the plots in the presence and absence of voles over the period of study. [1]

.....

- (e) Outline how these results appear to contradict the results of the previous study. [1]

.....  
.....

- (f) Suggest **one** advantage of measuring plant volume rather than plant biomass. [1]

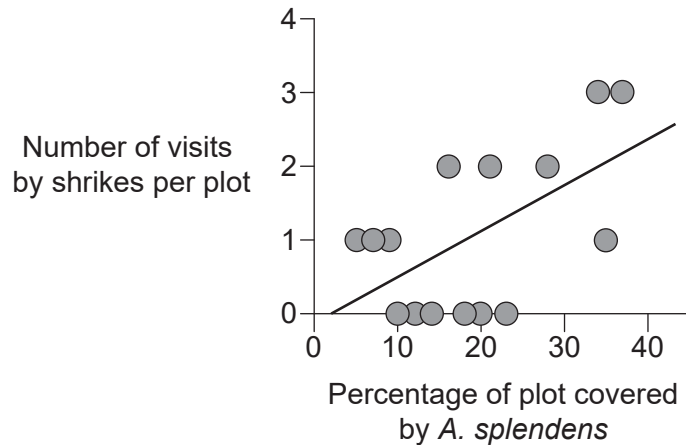
.....  
.....

**(This question continues on the following page)**



**(Question 1 continued)**

Shrikes (*Lanius spp.*) are predatory, carnivorous birds that feed on small animals, including voles. Shrikes were seen visiting the marked plots in the second study on plant volume of *A. splendens*, but not in the first study on biomass of two types of grass. The graph shows the number of visits shrikes made to 15 different marked plots of land according to percent coverage by the bunch grass *A. splendens*.



(g) Calculate the percentage of plots that had **two** visits by shrikes. [1]

.....

(h) State the relationship between number of shrike visits to the plots and percentage of plot covered by *A. splendens*. [1]

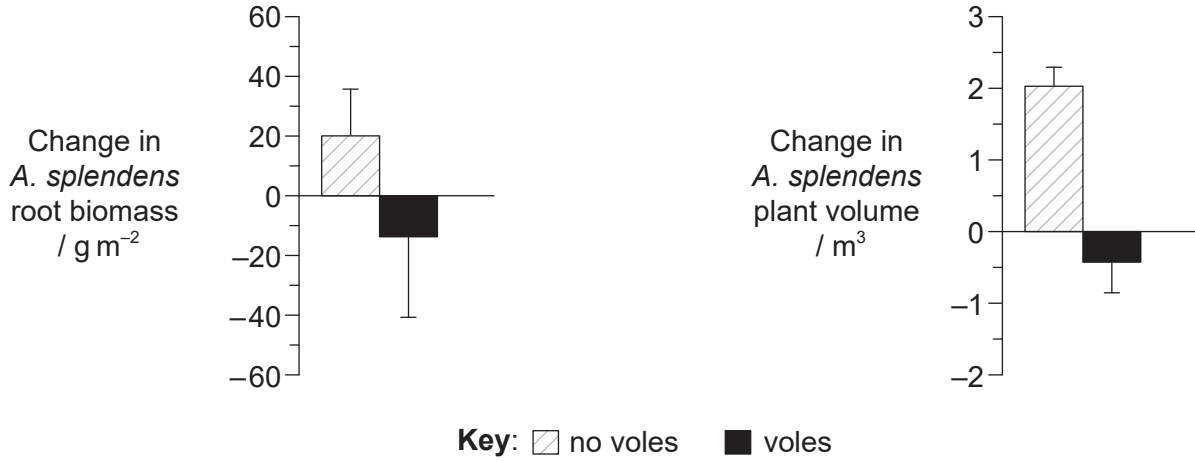
.....

**(This question continues on the following page)**



**(Question 1 continued)**

The researchers prepared plots, some with and some without voles. Shrikes were present in all plots. At the end of one month, the mean changes in root biomass and plant volume of *A. splendens* in the plots were measured.



- (i) Suggest a reason for the change in the plant volume of *A. splendens* in the plots over the period of this study.

[1]

.....

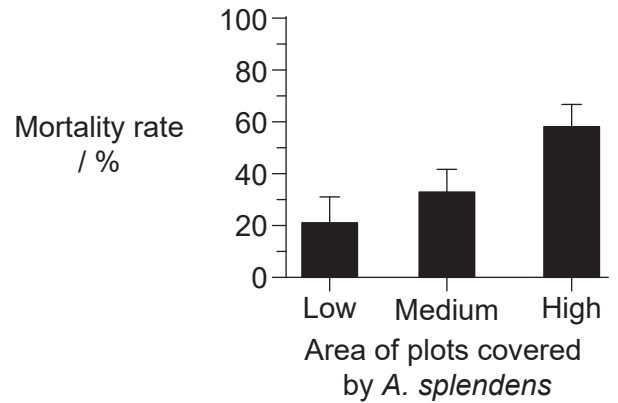
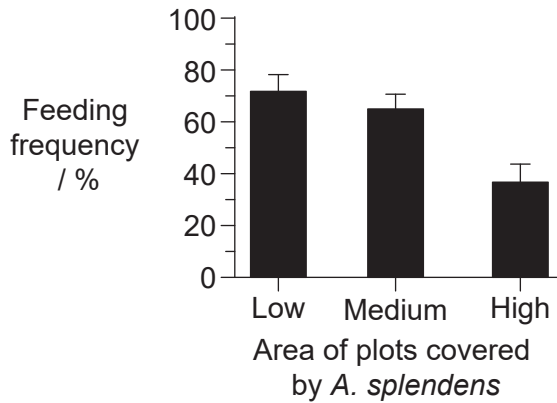
.....

**(This question continues on the following page)**



**(Question 1 continued)**

In a final experiment, the researchers prepared plots containing varying levels of cover of *A. splendens*, as well as the plants the voles normally feed on. Shrikes were not excluded from the plots. The amount of time the voles spent feeding and the mortality rate of the voles was recorded over a 3-week period.



(j) Describe, with a reason, the condition that favours survival of the voles. [1]

.....

.....

(k) The researchers concluded that the voles can modify their ecosystem in order to survive. Discuss this conclusion with reference to all the data in the question. [4]

.....

.....

.....

.....

.....

.....

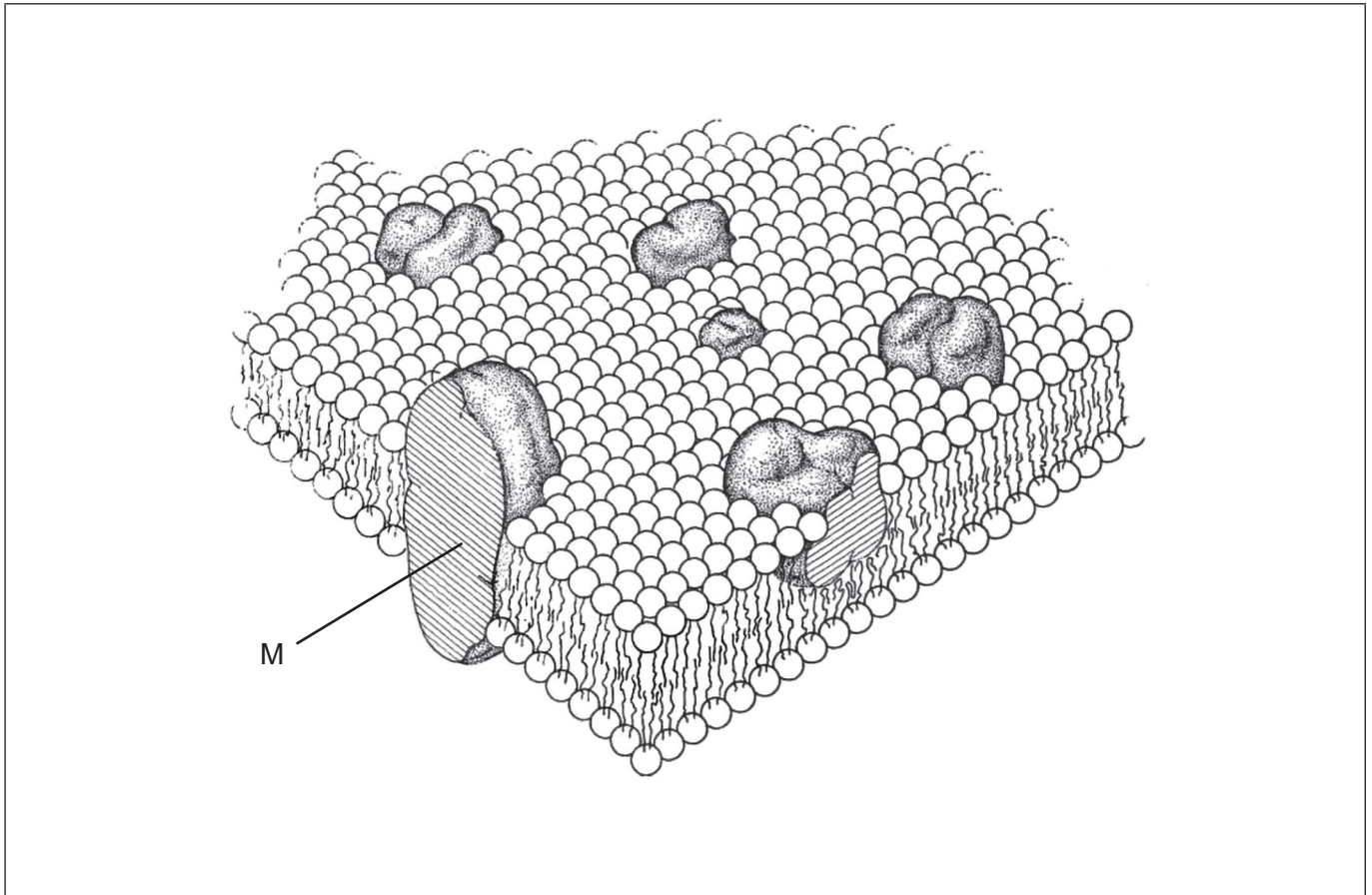
.....

.....





2. The diagram shows the original drawing of the cell membrane made in 1972 by Singer and Nicolson.



(a) Label with the letter H part of a phospholipid molecule that is hydrophilic. [1]

(b) Distinguish between this model of the cell membrane and the Davson–Danielli model. [1]

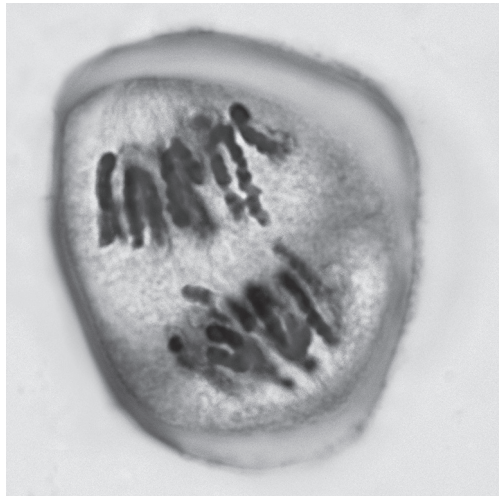
.....  
.....

(c) Explain the role of molecules such as M in sodium–potassium pumps. [3]

.....  
.....  
.....  
.....  
.....



3. The image shows a cell in the anther of a lily (*Lilium sp.*) plant during the first division of meiosis.



(a) (i) Identify the stage of meiosis shown in the image. [1]

.....

(ii) State where in the lily flower pollen would be formed. [1]

.....

(b) Distinguish between plant pollination and fertilization. [2]

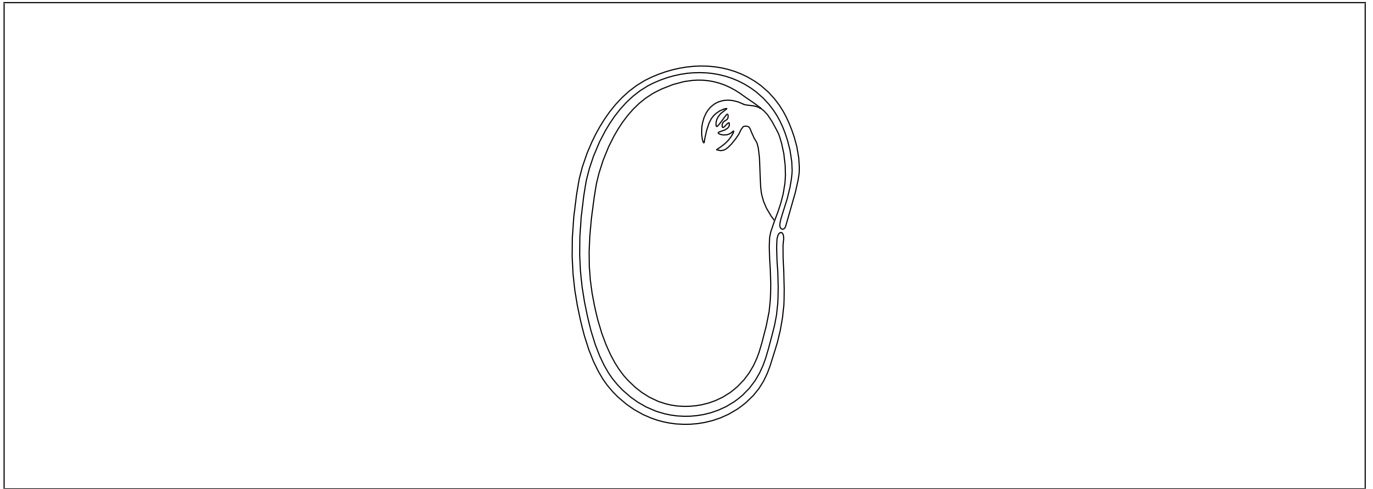
.....  
.....  
.....  
.....

(This question continues on the following page)



**(Question 3 continued)**

(c) The diagram shows a cross section through a broad bean (*Vicia faba*) seed.



- (i) On the diagram, label the cotyledon. [1]
- (ii) Outline the function of the cotyledon. [2]

.....

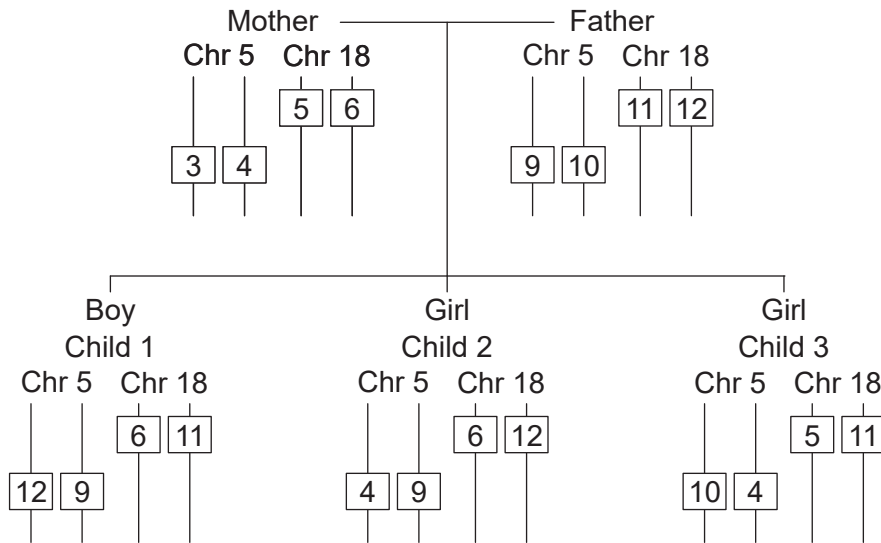
.....

.....

.....



4. The diagram shows the tandem repeats on two different chromosomes for a couple and their children. The number of tandem repeats of the sequence AGAT is shown on chromosome 5 (Chr 5) and the sequence of AGAA on chromosome 18 (Chr 18). One child is adopted.



- (a) Outline the use of tandem repeats in DNA profiling. [2]

.....

.....

.....

.....

- (b) Identify the child that is adopted, giving a reason for your answer. [1]

.....

.....

- (c) Explain the function of a promoter in DNA. [2]

.....

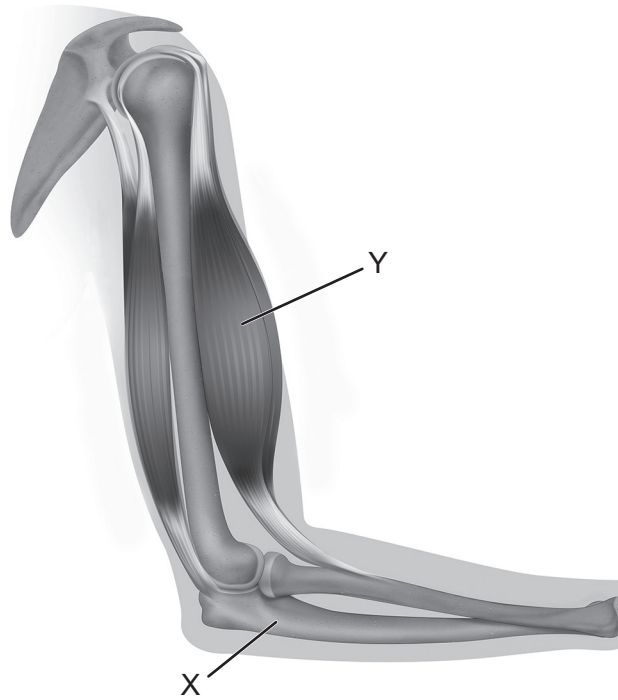
.....

.....

.....



5. The diagram shows the bones and muscles of the human elbow joint.



(a) Identify structures X and Y. [2]

X: .....
Y: .....

(b) Outline the antagonistic action of the muscles of the elbow. [2]

.....
.....
.....
.....

(c) State **one** reason that striated muscle cells are considered atypical. [1]

.....
-------

(This question continues on the following page)



**(Question 5 continued)**

(d) Explain how specialized cardiac muscle cells initiate each heartbeat.

[3]

.....

.....

.....

.....

.....

.....



**Section B**

Answer **two** questions. Up to one additional mark is available for the construction of your answers for each question. Answers must be written within the answer boxes provided.

6. The chemical and physical properties of water make it an essential medium for life.
- (a) Outline how water acts as a coolant when sweating. [3]
  - (b) Describe how the kidney regulates water when the body is dehydrated. [5]
  - (c) Explain how water is transported from the soil to the atmosphere in flowering plants. [7]
7. The confirmation of DNA as the genetic material, together with the elucidation of its structure by Crick and Watson, had a profound effect on modern biology.
- (a) Outline the reason that DNA replication is described as semi-conservative. [3]
  - (b) Describe how genetic variation is brought about by sexual reproduction. [5]
  - (c) Explain how isolation leads to speciation. [7]
8. The element carbon is an essential component of living matter, representing approximately 50% of all dry biomass, and is present in a wide range of compounds.
- (a) Describe how cellulose is formed from monosaccharides. [3]
  - (b) Outline the reasons that climate change is a threat to coral reefs. [5]
  - (c) Explain how carbon dioxide is converted to organic molecules during the light-independent reactions of photosynthesis. [7]



A large rectangular area containing 25 horizontal dotted lines for writing.



20EP15

Turn over





A large rectangular area containing 25 horizontal dotted lines for writing.



20EP17

Turn over



A large rectangular area containing 25 horizontal dotted lines for writing.



20EP19

Turn over

.....

.....

.....

.....

.....

.....

.....

.....

.....

.....

.....

.....

.....

.....

.....

.....

**Disclaimer:**

Content used in IB assessments is taken from authentic, third-party sources. The views expressed within them belong to their individual authors and/or publishers and do not necessarily reflect the views of the IB.

**References:**

1. (a) Cui, C., Xie, Y., Hua, Y., et al., 2020. Brandt's vole (*Lasiopodomys brandtii*) affects its habitat quality by altering plant community composition. *Biologia* 75, pp.1097–1104. [e-journal] <https://doi.org/10.2478/s11756-020-00469-z>. Source adapted.

1. (d)(g)(i) Zhong, Z., et al., 2022. A rodent herbivore reduces its predation risk through ecosystem engineering. *Current Biology* 32(8), pp.1869–1874.e4 [e-journal] <https://doi.org/10.1016/j.cub.2022.02.074>. Source adapted.

2. Martin, L., 2022. *Discovering the Structure of the Plasma Membrane*. [online] Available at: <https://archive.org/details/cnx-org-col10470/page/n19/mode/2up> [Accessed 13 April 2023]. Source adapted.

3. (a) Reschke, E., n.d. [*Lilium - Lily 400X*]. [image online] Available at: <https://www.gettyimages.com.mx> [Accessed 13 April 2023]. Source adapted.

4. Angers, A., Kagkli, D., Oliva, L., Petrillo, M. and Raffael, B., 2019. *Study on DNA Profiling Technology for its Implementation in the Central Schengen Information System*. [online] Available at: <https://publications.jrc.ec.europa.eu/repository/handle/JRC116742> [Accessed 13 April 2023]. Source adapted.

5. Aldona, n.d. [*Human arm*]. [image online] Available at: <https://www.gettyimages.co.uk/detail/illustration/an-example-of-an-anatomical-and-physical-royalty-free-illustration/1291366338> [Accessed 16 May 2023]. Source adapted.

**All other texts, graphics and illustrations © International Baccalaureate Organization 2024**

